

# PRO-DENSE<sup>®</sup>

## Injectable Regenerative Graft



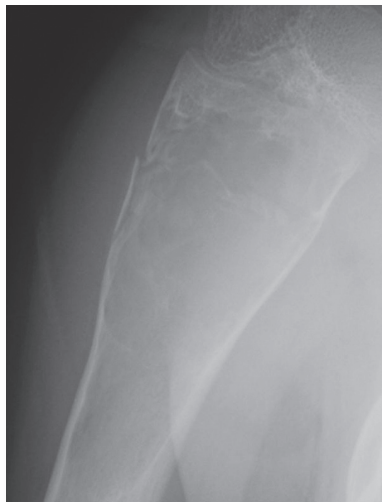
Predictable Bone  
Regeneration

- Stronger New Bone\*
- Faster, Denser Bone Regeneration\*
- Remodel to Normal Bone\*

\*All claims based on a critically sized canine proximal humerus defect model. It is unknown how results from the canine model compare with clinical results in humans. Data on file at Wright.

# Watch bone grow.

PRO-DENSE® Graft is the **first** and **only** bone graft substitute indicated for use in bone voids resulting from the resection of benign bone cysts and tumors.



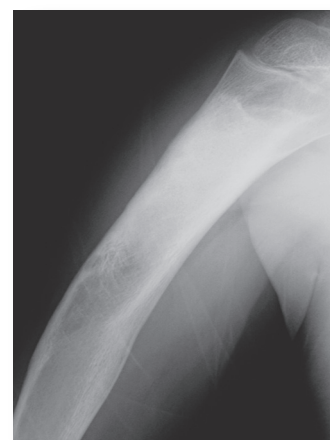
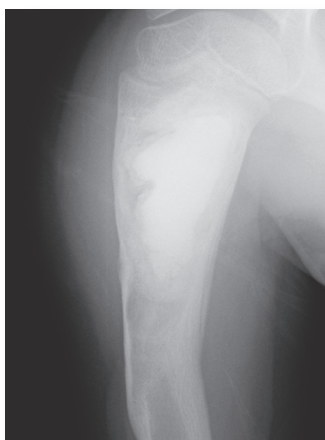
"The regenerate is far denser and more robust than any other grafting material I have used. It appears that the resorption of the graft and subsequent bone replacement are timed just right."

*Steven Gitelis, MD  
Rush University- Chicago, IL*

Eleven year-old male with a unicameral bone cyst of the proximal humerus. A two-needle technique was utilized to percutaneously graft the UBC. Approximately 20cc of PRO-DENSE® graft was used to completely fill the lesion. New bone formation was detected at 1 month. The 2 and 10 month radiographs show progressive remodeling with continual new bone formation and resorption of graft. Note the change in shape of humerus in the 10 month radiograph compared to the pre-op radiograph.

No complications were reported. Patient was fully active at 3 months and remains at full activity at present. Individual results may vary.

In recently published clinical studies, PRO-DENSE® Graft demonstrates itself as a viable option for the reconstruction of cavitory bone defects following intralesional curettage of primary benign bone tumors.\*



CASE STUDY | 1 month, 2 month and 10 month post-op radiographs

Demand PRO-DENSE® Injectable Regenerative Graft for your next benign bone lesion.



1023 Cherry Road  
Memphis, TN 38117  
800 238 7117  
901 867 9971  
www.wright.com

62 Quai Charles de Gaulle  
69006 Lyon  
France  
+33 (0)4 72 84 10 30  
www.tornier.com

18 Amor Way  
Letchworth Garden City  
Hertfordshire SG6 1UG  
United Kingdom  
+44 (0)845 833 4435

\*Gentile, et al. *J Pediatr Orthop* 2013;33:254-61  
Evaniew, et al. *Orthopedics*. 2013;36(2):e216-e222  
Fillingham, et al. *Clin Orthop Relat Res* 2012;470(7):2014-20

™ and ® denote Trademarks and Registered Trademarks of Wright Medical Group N.V. or its affiliates.  
©2016 Wright Medical Group N.V. or its affiliates. All Rights Reserved.