

OSTEOSET[®] 2 DBM

Bone Graft Substitute
with Bioassayed DBM

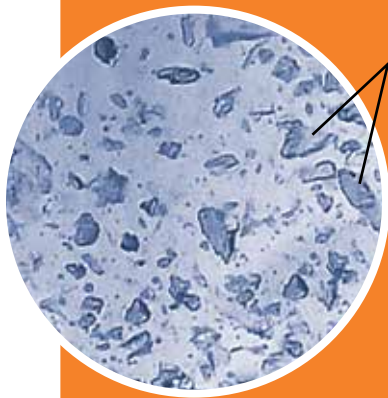


 **WRIGHT**[™]
FOCUSED EXCELLENCE

OSTEOSET[®] 2 DBM

BONE GRAFT SUBSTITUTE WITH BIOASSAYED DBM

DBM encapsulated in the calcium sulfate is gradually released over the period of resorption, allowing a steady impact from the range of growth factors found in DBM, including BMP-2, BMP-4, and others.



DBM particles

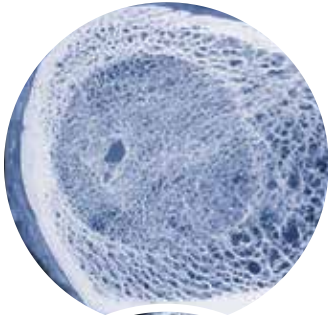
Pellet Cross-Section
OSTEOSET[®] 2 DBM pellet (Mag. 15.4x) demonstrating even distribution of DBM particles throughout the pellet.

THE POWER OF SUSTAINED BMP RELEASE.

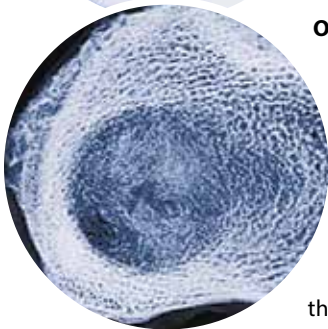
OSTEOSET[®] 2 DBM graft is a bone graft substitute incorporating demineralized bone matrix (approximately 53% by volume) into OSTEASET[®] surgical-grade calcium sulfate pellets. These two bone graft materials provide a combination of osteoinduction and osteoconduction for guided bone regeneration.

Unlike many DBM-containing products, every lot of OSTEASET[®] 2 DBM graft is bioassayed to ensure its osteoinductive potential.

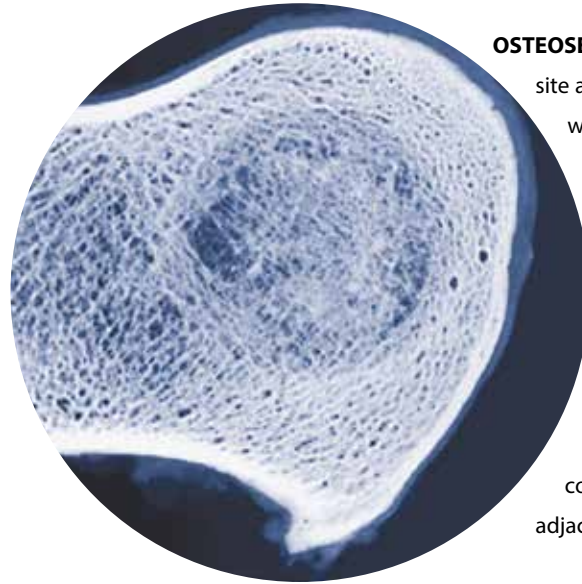
CANINE HUMERUS CONTACT RADIOGRAPHS



Autograft
at six weeks



OSTEOSET® DBM graft site at six weeks demonstrating concentric lamellar bone formation and organized trabecular pattern throughout the defect, similar to what is seen in the autograft filled defect



OSTEOSET® DBM graft site at twenty-six weeks reveals a well developed network of fine and coarse trabeculae with interconnecting struts fully occupying the entire defect and continuous with adjacent medullary bone



MECHANISM OF ACTION

DBM is encapsulated in the calcium sulfate pellet.



Calcium sulfate resorbs, providing an osteoconductive scaffold.



A sustained release of BMPs from the osteoinductive DBM.

Sustained release of BMP-2, BMP-4, TGF-β1, IGF-1



ORDERING information



8600-3005		
OSTEOSET® 2 DBM		
3.0 MM PELLETS	5cc	
8600-3010		
OSTEOSET® 2 DBM		
3.0 MM PELLETS	10cc	
8600-4810		
OSTEOSET® 2 DBM		
4.8 MM PELLETS	10cc	
8600-4820		
OSTEOSET® 2 DBM		
4.8 MM PELLETS	20cc	



Wright Medical Technology, Inc.
1023 Cherry Road
Memphis, TN 38117
800 238 7117
901 867 9971
www.wmt.com

Wright Medical EMEA
Atlas Arena, Australia Building
Hoogoorddreef 7
1101 BA Amsterdam
the Netherlands
011 31 20 565 9060